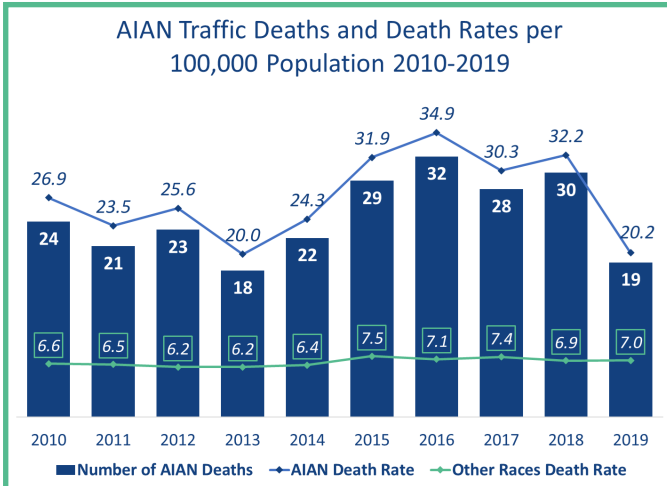




# American Indian/Alaska Native (AIAN) Traffic Deaths

**Trends** show the traffic death rate per 100,000 population consistently runs three to four times higher for AIAN people, even if the actual number of traffic deaths varies from year to year. The AIAN traffic death rate has trended slightly upward in the previous decade whereas for other races the rate remained unchanged.

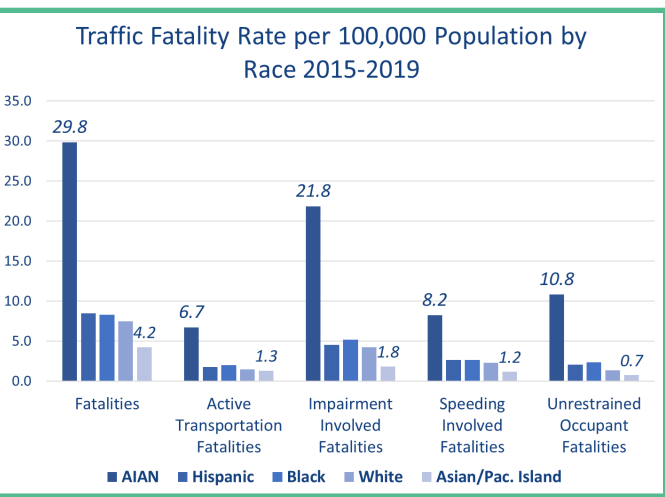
**I care, because** only one of every hundred Washingtonians are AIAN yet one of every twenty traffic fatalities are AIAN people. Further, one of every ten unrestrained vehicle occupant fatalities are AIAN people. In the previous ten years Washington lost 246 AIAN people to traffic death.



**Impairment and not wearing seat belts are the most common high-risk behaviors leading to traffic death among AIAN people.**

**AIAN traffic death rates** per 100,000 population reveal substantial disparities in risk leading to traffic deaths. An AIAN active transportation user (walker or rollers) is almost five times more likely to be a traffic death victim compared to all other races. AIAN people are also involved in high-risk driving behaviors at a higher rate than all other races, particularly impaired driving and not wearing seat belts. In addition to high proportions of AIAN traffic deaths being unrestrained, seat belt observation surveys consistently show much lower seat belt use rates on tribal lands versus statewide seat belt use estimates.

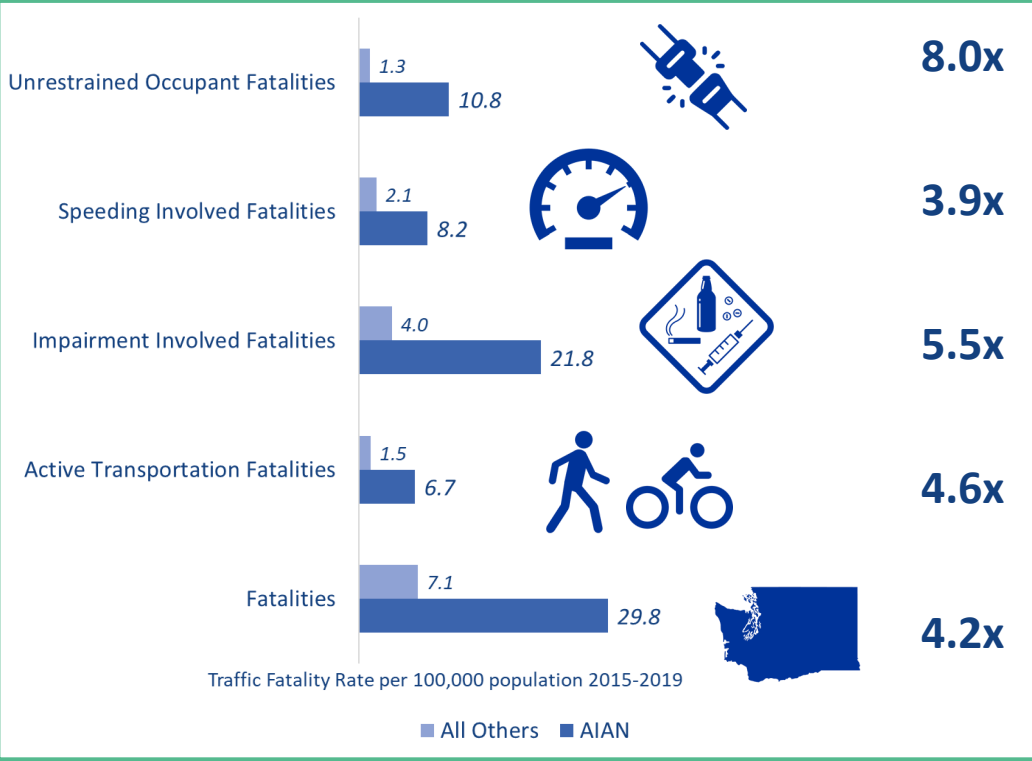
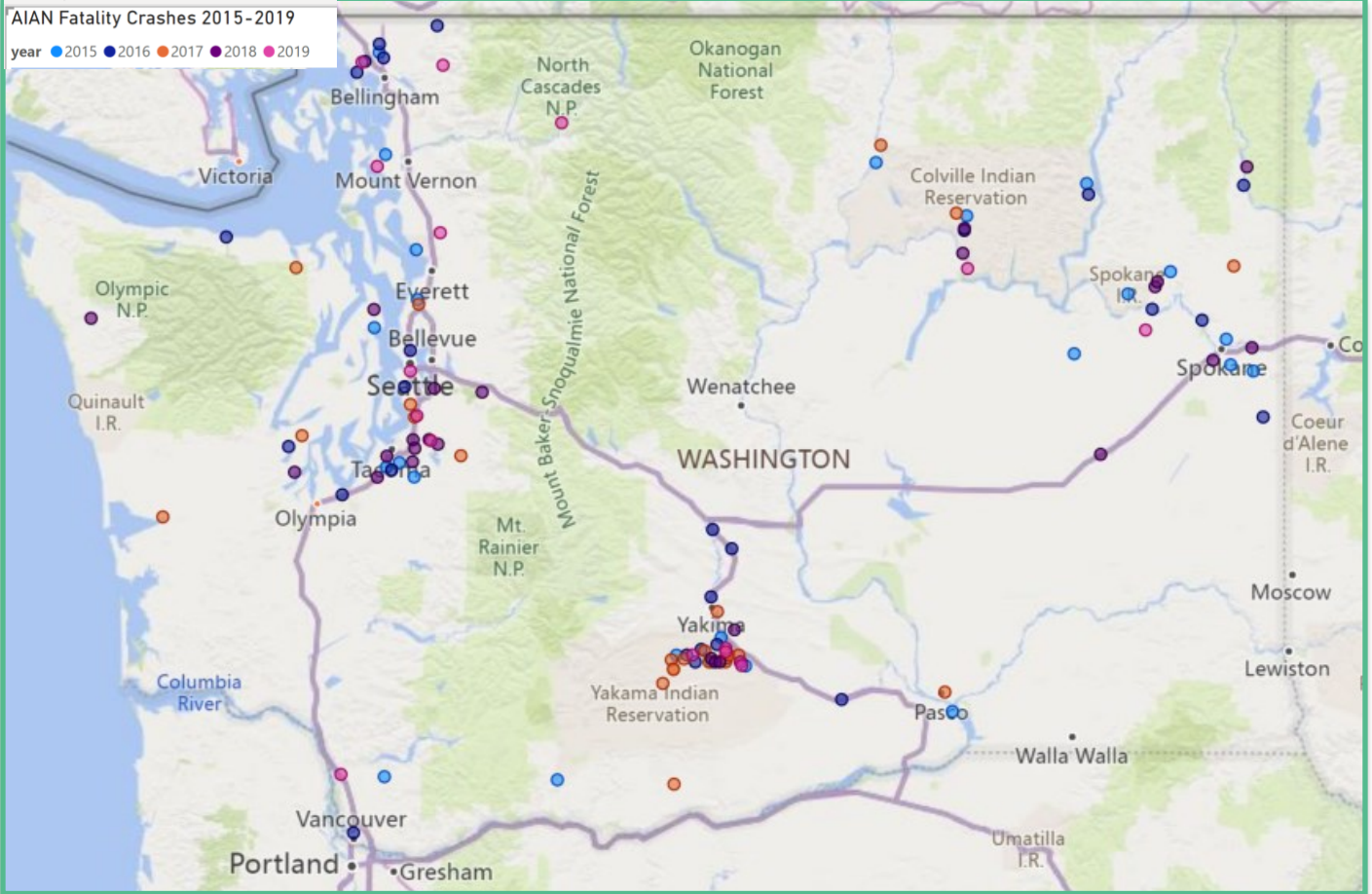
- Did you know?**
- ⇒ From 2015-2019 more than 50% of AIAN traffic deaths occurred on county roads or reservation lands, versus 25% of all other races.
  - ⇒ Nearly one-third of AIAN traffic deaths occurred in Yakima County, versus less than 5% of all other races.
  - ⇒ Almost half of AIAN traffic fatalities were people ages 26-45, versus 30% of all other races.
  - ⇒ Nine percent of AIAN traffic deaths were youth under age 18, versus 5% of all other races.
  - ⇒ Three of every four (75%) AIAN traffic deaths involved impairment, versus 55% of all other races.
  - ⇒ More than one-third of AIAN deaths were unrestrained vehicle occupants, versus less than 20% of all other races.



**Data Sources**  
Washington Fatality Analysis Reporting System (FARS), Washington Traffic Safety Commission,  
Washington Population Estimates, The Office of Financial Management



# American Indian/Alaska Native (AIAN) Fatality Crashes 2015-2019



## Did you know?

- ⇒ Half of AIAN traffic deaths occurred in just three counties; Yakima, King, and Okanogan. One-quarter of other deaths occurred in these counties.
- ⇒ The AIAN traffic death rate is more than four times higher than all other races.
- ⇒ AIAN people are overrepresented among traffic death involving high-risk behaviors.